

Looking for ways to use technology and issues relating to ICT in the classroom? Try some of these suggestions.

LESSON PLAN 4: GOOGLE EARTH – CREATING A ‘TOUR’

Objective: Using satellite imaging technology and learning about the geography of the world

Age range: 12-18

YOU WILL NEED

- ▶ One copy of Google Earth (<http://earth.google.com>)
- ▶ Computer and Internet connection
- ▶ An idea for a tour

METHOD

1. Find the overview of your selected area and identify the first Placemark. (Diagram 1)

2. In the menu, go to Add and select Placemark. A window will appear. (Diagram 2)

- Using your mouse, move the Placemark around to the location you want.
- You can change the appearance of the Placemark using the button to the right of the name box
- Type in the name of your location – in this case New Plymouth – and add any additional information in the Description box. (Diagram 3)
- Press Okay to create your Placemark. (Diagram 4)
- The Placemark will appear in the My Places folder. Clicking it will always return you to New Plymouth.

3. Now to create your tour. In the menu, go to Add and select Folder. A window will appear. Give the folder the name of your tour – in this case Cities in New Zealand – and add any additional information in the Description box. (Diagram 5)

- Move your Placemark into the Folder – either ‘click and drag’ or ‘cut and paste’ (or create the folder first).

4. Add more Placemarks. Repeat 2, highlighting the tour folder beforehand, so as to save your Placemark in your folder (Diagram 6) and create your tour.

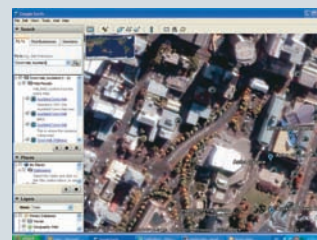
5. To zoom in on your Placemark use the controls in the top right-hand corner – alternatively, double left click on your mouse to zoom in, and double right click to zoom out. (Diagram 7)

6. Your tour does not need to be confined to places. It could be lakes, seas, mountains, forest, beaches, churches, countries, islands, sports venues – you name it. (Diagram 8) Maybe the new ‘Seven Wonders of the World’.

7. Click from location to location in your tour folder and Google Earth will move from place to place.

FIND YOUR HOUSE ON GOOGLE EARTH

In the Search box (above *My Places*), click *Fly To*. Enter the address in the input box and click the Search button. Google Earth will automatically fly you to the address, in this case Auckland’s Town Hall.



TOPICS FOR DISCUSSION

- What is a satellite and how does it work?
- What can they be used for?
- What can satellite images be used for?
- What types of locations could be made into a tour?

